



# For Sale: Shared Ownership New Build Homes

## Hook Hollow, Seend Cleeve



### A passive house development of homes for local people

#### **Property Value** (subject to change as a new valuation is required 3 months prior to sale)

£335,000.00 (1 x 2 Bedroom house)

£375,000.00 (2 x 3 Bedroom house)

#### **Share Percent price based on 40 % Shared Percent Example**

£134,000.00 (2 Bedroom house) £150,000.00 (3 Bedroom house)

#### **Monthly rent based on 40 % Shared Percent Example**

£460.63 (2 Bedroom house) £515.63 (3 Bedroom house)

#### **Monthly Service Charge (Estimated)**

£40.00 (2 Bedroom house) £40.00 (3 Bedroom house)

#### **Property Features**

- Full passive house design with solar PV and High levels of insulation – low energy usage.
- Triple glazed windows and doors/heat recovery system
- Dimplex Quantum RF HHR storage heaters
- Air source pump water heater
- Entrance hall leading to lounge with patio doors to the rear enclosed garden
- Entrance hall leading to open plan kitchen/dining area.
- Fitted kitchen – smart modern design built in over & hob.
- Smart modern bathroom plus ground floor WC
- Fully carpeted, vinyl flooring to bathroom, WC and kitchen
- Off road parking spaces

#### **Description**

This is a small development of 10 homes for local people and is being brought forward in partnership between White Horse Housing Association and Seend Community Land and Asset Trust. Set in a stunning rural location, Seend is a small village with a primary school and two pubs including one in a canal side setting. The village is approximately 2 miles from the town of Melksham and 7 miles from the county town of Trowbridge. If you have a connection to Seend or surrounding parishes, we would be pleased to hear from you.

The initial share available for purchase is between 10% to 75% subject to a financial assessment, further purchases of shares will be restricted to 80% in total to ensure these homes are available to local people forever. The example of costs given is based upon an initial purchase of 40%.

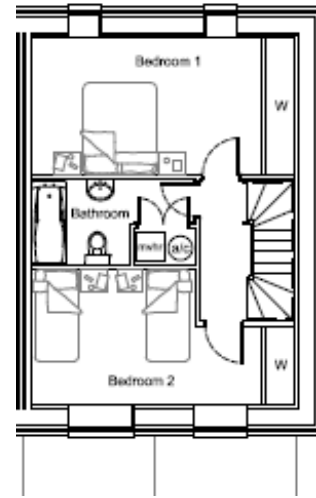
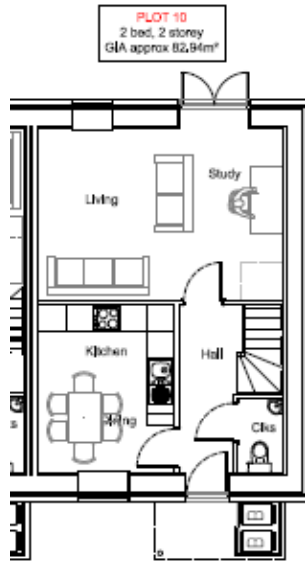
These details do not constitute any part of an offer or contract. Any prospective purchaser must satisfy themselves by inspection or otherwise of the accuracy of the information displayed.

For further information please contact Belinda or Sarah at White Horse Housing Association.

[Belinda.eastland@whitehorsehousing.co.uk](mailto:Belinda.eastland@whitehorsehousing.co.uk) [sarah.occleshaw@whitehorsehousing.co.uk](mailto:sarah.occleshaw@whitehorsehousing.co.uk)

Tel 01380 850916 [www.whitehorsehousing.co.uk](http://www.whitehorsehousing.co.uk)

**2-bedroom property – Plot 10**



**3-bedroom properties – Plots 5 & 6**

